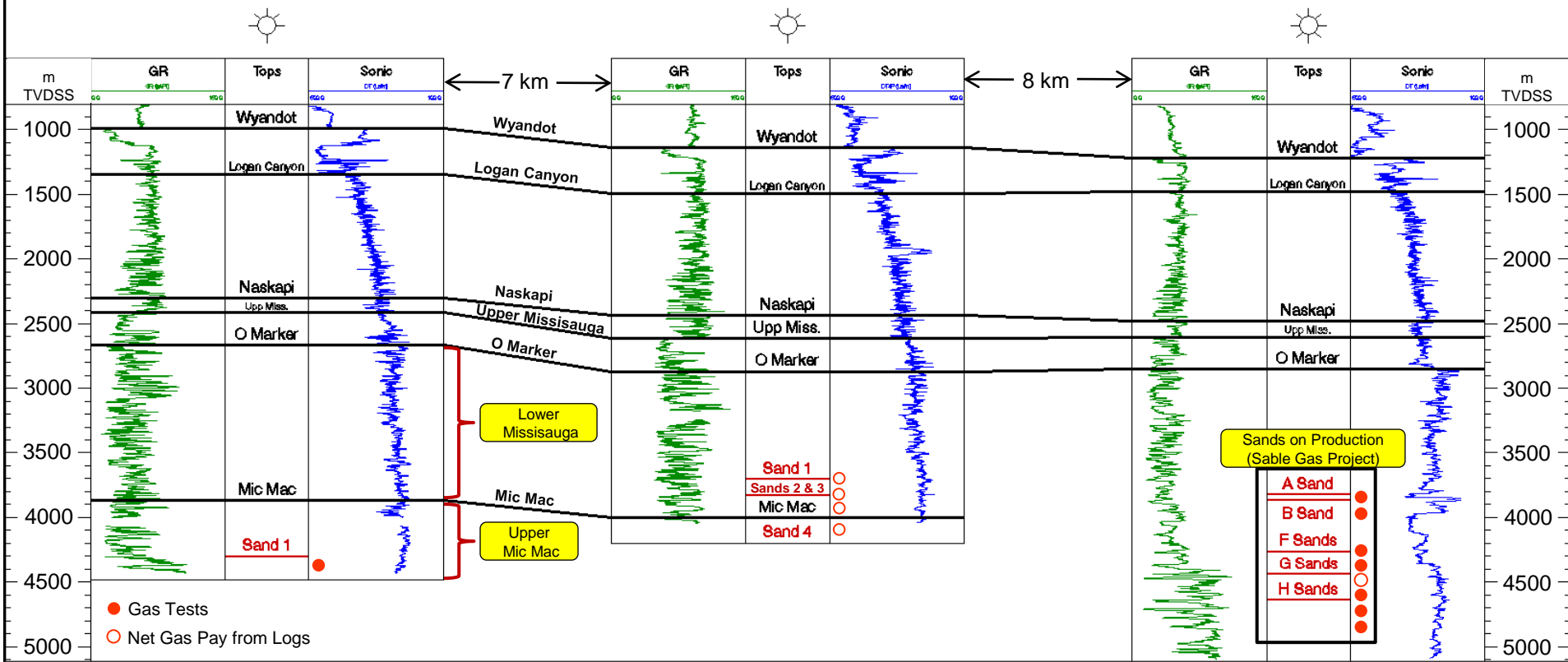


# Migrant to Thebaud Structural XSection

Migrant N-20

Adamant N-97

Thebaud C-74



Migrant to Thebaud Structural Cross-Section. The stratigraphic position of the Propeller and Manhasset target intervals (Lower Missisauga to Mic Mac) is shown. Note Lower Missisauga and Mic Mac Formation gas sands are shown in red font. The Thebaud gas field is a Commercial Discovery and is currently producing as part of the Sable Gas Project. Note this xsection crosses Parcel #2 from northwest to southeast.